

**TECHNICAL MANUAL**

**UNIT, DIRECT SUPPORT AND GENERAL SUPPORT  
MAINTENANCE REPAIR PARTS  
AND SPECIAL TOOLS LIST**

**FOR**

**REFRIGERATOR, PREFABRICATED  
(1200 CUBIC FOOT)  
NSN 4110-01-239-9200**

**Approved for public release; Distribution is unlimited.**

**\*This manual supersedes TM 5-4110-246-24P, 17 June 1988.**

---

**HEADQUARTERS, DEPARTMENT OF THE ARMY  
21 December 1990**

TECHNICAL MANUAL

NO. 9-4110-246-24P

HEADQUARTERS,  
DEPARTMENT OF THE ARMY  
WASHINGTON, D.C., 21 December 1990

Unit, Direct Support and General Support  
Maintenance Repair Parts and Special Tools List

for

**REFRIGERATOR, PREFABRICATED (1200 CUBIC FOOT)  
NSN 4110-01-239-9200**

**Current as of 28 November 1990**

**REPORTING ERRORS AND RECOMMENDING IMPROVEMENTS**

You can help improve this manual. if you find any mistakes or if you know of a way to improve the procedures, please let us know. Mail your letter, DA Form 2028 (Recommended Changes to Publications and Blank Forms) or DA Form 2028-2 located in the back of this manual directly to: Commander, U.S. Army Troop Support Command, ATTN: AMSTR-MMTAS, 4300 Goodfellow Boulevard, St. Louis, MO 63120-1798. A reply will be furnished directly to you.

**Approved for public release; distribution is unlimited**

**TABLE OF CONTENTS**

			Page	Illus Figure
Section	I	INTRODUCTION .....	1	
Section	II	REPAIR PARTS LIST .....	1-1	
Group	00	1200 Cubic Foot Prefabricated Refrigerator .....	1-1	1
Group	01	Right Ceiling Panel Assembly. ....	2-1	2
Group	02	Center Ceiling Panel Assembly .....	3-1	3
Group	03	Left Ceiling Panel Assembly .....	4-1	4
Group	04	Door Canopy .....	4-1	1
Group	05	walk-in Door Assembly .....	5-1	5
Group	06	Door Frame Panel Assembly .....	6-1	6
Group	07	Evaporator Panel Assembly .....	7-1	7
Group	08	Standard Wall Panel Assembly .....	8-1	8
Group	09	Corner Panel Assembly .....	9-1	9
Group	10	Right Floor Panel Assembly .....	10-1	10
Group	11	Center Floor Panel Assembly .....	11-1	11
Group	12	Left Floor Panel Assembly .....	12-1	12
Group	13	Floor Racks Large and Small .....	12-1	1
Section	III	SPECIAL -TOOLS LIST (Not Applicable)		
Section	IV	CROSS-REFERENCE INDEXES .....	I-1	
		National Stock Number Index .....	I-1	
		Part Number Index .....	I-2	
		Figure and Item Number Index .....	I-4	

\*This manual supersedes TM 5-4110-246-24P, 17 June 1988.

**UNIT, DIRECT SUPPORT  
AND GENERAL SUPPORT  
MAINTENANCE REPAIR PARTS AND SPECIAL TOOLS LIST**

**SECTION I. INTRODUCTION**

**1. SCOPE.** This RPSTL lists and authorizes spares and repair parts; special tools; special test, measurement, and diagnostic equipment (TMDE); and other special support equipment required for performance of unit, direct support, and general support maintenance of the Refrigerator, Prefabricated (1200 Cubic Foot). It authorizes the requisitioning, issue, and disposition of spares, repair parts and special tools as indicated by the source, maintenance and recoverability (SMR) codes.

**2. GENERAL.** In addition to this section, Introduction, this Repair Parts and Special Tools List is divided into the following sections:

**a. Section II. Repair Parts List.** A list of spares and repair parts authorized by this RPSTL for use in the performance of maintenance. The list also includes parts which must be removed for replacement of the authorized parts. Parts lists are composed of functional groups in ascending alphanumeric sequence, with the parts in each group listed in ascending figure and item number sequence. Bulk materials are listed in item name sequence. Repair parts kits are listed separately in their own functional group within Section II. Repair parts for repairable special tools are also listed in this section. Items listed are shown on the associated illustration(s)/figure(s).

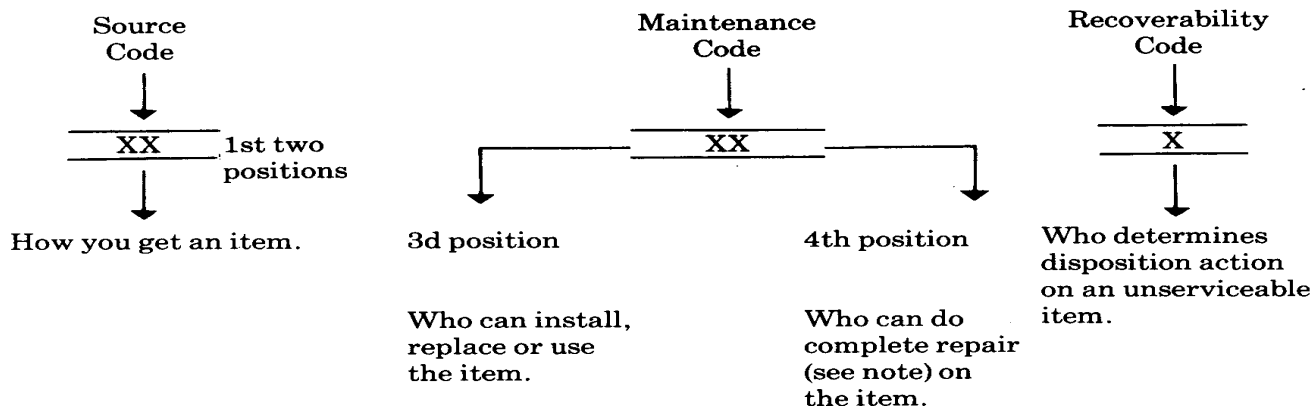
**b. Section II. Special Tools List.** A list of special tools, special TMDE, and other special support equipment authorized by this RPSTL (as indicated by Basis of Issue (BOI) information in DESCRIPTION AND USABLE ON CODE column) for the performance of maintenance.

**c. Section IV. Cross-references indexes.** A list, in National Item Identification Number (NIIN) sequence, of all National stock numbered items appearing in the listing, followed by a list in alphanumeric sequence of all part numbers appearing in the listings. National stock numbers and part numbers are cross referenced to each illustration figure and item number appearance. The figure and item number index lists figure and item number in alphanumeric sequence and cross references NSN, CAGEC and part number.

**3. EXPLANATION OF COLUMNS (SECTIONS II AND III).**

**a. ITEM NO. (Column (1)).** Indicates the number used to identify items called out in the illustration.

**b. SMR Code (Column (2)).** The Source, Maintenance, and Recoverability (SMR) code is a 5-position code containing supply/requisitioning information, maintenance category authorization criteria, and disposition instruction, as shown in the following breakout:




\*Complete Repair: Maintenance capacity, capability, and authority to perform all corrective maintenance tasks of the "Repair" function in a use/user environment in order to restore serviceability to a failed item.

(1) **Source Code.** The source code tells you how to get an item needed for maintenance, repair, or overhaul of an end item/equipment. Explanations of source codes follows:

Source Code	Explanation
PA PB PC** PD PE PF PG	Stocked items; use the applicable NSN to request(requisition items with these source codes. They are authorized to the category indicated by the code entered in the 3rd position of the SMR code.  **NOTE: Items coded PC are subject to deterioration.
KD KF KB	

Source Code	Explanation
MO- (Made at Unit/AVUM Level) MF- (Made at DS/AVUM Level) MH- (Made at GS Level) ML- (Made at Specialized Repair Activity (SRA)) MD- (Made at Depot)	Items with these codes are not to be requested/requisitioned individually. They must be made from bulk material which is identified by the part number in the DESCRIPTION and USABLE ON CODE (UOC) column and listed in the Bulk Material group of the repair parts list in this RPSTL. If the item is authorized to you by the 3rd position code of the SMR code, but the source code indicates it is made at a higher level, order the item from the higher level of maintenance.

Code	Explanation
AO- (Assembled by Unit/AVUM Level) AF- (Assembled by DS/AVIM Level) AH- (Assembled by GS Category) AL- (Assembled by SRA) AD- (Assembled by Depot)	 <p>Items with these codes are not to be requested/ requisitioned individually. The puts that make up the assembled item must be requisitioned or fabricated and assembled at the level of maintenance indicated by the source code. H the 3rd position code of the SMR code authorizes you to replace the item, but the source code indicates the items are assembled at a higher level, order the item from the higher level of maintenance.</p>

Code	Explanation
XA- XB- XC- XD-	<p>Do not requisition "XA"-coded item. Order its next higher assembly. (Refer to the NOTE below.)</p> <p>If an UXB" item is not available from salvage, order it using the CAGEC and part number given.</p> <p>Installation drawing, diagram, instruction sheet, field service drawing, that is identified manufacturer's part number.</p> <p>Item is not stocked. Order an XD"-coded item through normal supply channels using the CAGEC and part number given, if no NSN is available.</p>

**NOTE**

Cannibalization or controlled exchange, when authorized, may be used as a source of supply for items with the above source codes, except for those source coded "XA" or those aircraft support items restricted by requirements of AR 750-1.

**(2) Maintenance Code.** Maintenance codes tells you the level(s) of maintenance authorized to USE and REPAIR support items. The maintenance codes are entered in the third and fourth positions of the SMR code as follows:

**(a)** The maintenance code entered in the third position tells you the lowest maintenance level authorized to remove, replace, and use an item. The maintenance code entered in the third position will indicate authorization to one of the following levels of maintenance.

Code	Application/Explanation
C	-.Crew or operator maintenance done within organizational or aviation unit maintenance.
O	- Organizational or aviation unit category can remove, replace, and use the item.
F	- Direct support or aviation intermediate level can remove, replace, and use the item.
H	- General support level can remove, replace, and use the item.
L	- Specialized repair activity can remove, replace, and use the item.

D - Depot level can remove, replace, and use the item.

**(b)** The maintenance code entered in the fourth position tells whether or not the item is to be repaired and identifies the lowest maintenance level with the capability to do complete repair (i.e., perform all authorized repair functions.) NOTE: Some limited repair may be done on the item at a lower level of maintenance, if authorized by the Maintenance Allocation Chart (MAC) and SMR codes. This position will contain one of the following maintenance codes.

Code	Application/Explanation
------	-------------------------

O - Organizational or (aviation unit) is the lowest level that can do complete repair of the item.

F - Direct support or aviation intermediate is the lowest level that can do complete repair of the item.

H - General Support is the lowest level that can do complete repair of the item.

L - Specialized repair activity is the lowest level that can do complete repair of the item.

D - Depot is the lowest level that can do complete repair of the item.

Z - Nonreparable. No repair is authorized.

B - No repair is authorized. (No parts or special tools are authorized for the maintenance of a "B" coded item). However, the item may be reconditioned by adjusting, lubricating, etc., at the user level.

**(3) Recoverability Code.** Recoverability codes are assigned to items to indicate the disposition action on unserviceable items. The recoverability code is entered in the fifth position of the SMR Code as follows:

Recoverability Codes	Application/Explanation
----------------------	-------------------------

Z - Nonreparable item. When unserviceable, condemn and dispose of the item at the level of maintenance shown in 3d position of SMR Code.

O - Repairable item. When not economically repairable, condemn and dispose of the item at organizational or aviation unit level

F - Repairable item. When uneconomically repairable, condemn and dispose of the item at the direct support or aviation intermediate level

H - Repairable item. When uneconomically repairable, condemn and dispose of the item at the general support level.

D - Repairable item. When beyond lower level repair capability, return to depot. Condemnation and disposal of item not authorized below depot level.

L - Reparable item. Condemnation and disposal not authorized below specialized repair activity (SRA).

A - Item requires special handling or condemnation procedures because of specific reasons (e.g., precious metal content, high dollar value, critical material, or hazardous material). Refer to appropriate manuals/directives for specific instructions.

**c. CAGEC (Column (3)).** The Commercial and Government Entity Code (CAGEC) is a 5-digit numeric code which is used to identify the manufacturer, distributor, or Government agency, etc., that supplies the item.

**d. PART NUMBER (Column (4)).** Indicates the primary number used by the manufacturer, (individual, company, firm, corporation, or Government activity), which controls the design and characteristics of the item by means of its engineering drawings, specifications standards, and inspection requirements to identify an item or range of items.

#### NOTE

When you use an NSN to requisition an item, the item you receive may have a different part number from the part ordered.

**e. DESCRIPTION AND USABLE ON CODE (UOC) (Column (5)).** This column includes the following information:

(1) The Federal item name and, when required, a minimum description to identify the item.

(2) The physical security classification of the item is indicated by the parenthetical entry, e.g., PhySec C1 - Confidential, Phy Sec C1 (S) - Secret, Phy Sec C1 (T) - Top Secret.

(3) Items that are included in kits and sets are listed below the name of the kit or set.

(4) Spare/repair parts that make up an assembled item are listed immediately following the assembled item line entry.

(5) Part numbers for bulk materials are referenced in this column in the line item entry for the item to be manufactured/fabricated.

(6) When the item is not used with all serial numbers of the same model, the effective serial numbers are shown on the last line(s) of the description (before UOC).

(7) The usable on code, when applicable (see paragraph 5, Special Information).

(8) In the Special Tools List section, the basis of issue (BOI) appears as the last line(s) in the entry for each special tool, special TMDE, and other special support equipment. When density of equipments supported exceeds density spread indicated in the basis of issue, the total authorization is increased proportionately.

(9) The statement "END OF FIGURE" appears just below the last item description in Column 5 for a given figure in both Section II and Section III.

(10) The indenture, shown as dots appearing before the repair part, indicates that the item is a repair part of the next higher assembly.

f. **QTY (Column (6)).** The QTY (quantity per figure column) indicates the quantity of the item used in the breakout shown on the illustration figure, which is prepared for a functional group, subfunctional group, or an assembly. A "V" appearing in this column in lieu of a quantity indicates that the quantity is variable and may vary from application to application.

#### 4. EXPLANATION OF COLUMNS (SECTION IV).

##### a. NATIONAL STOCK NUMBER (NSN) INDEX.

(1) **STOCK NUMBER column.** This column lists the NSN by National item identification number (NIIN) sequence. The NIIN consists of the last nine digits of the NSN, i.e.

$$\begin{array}{r} \text{NSN} \\ \hline 5305-01-574-1467 \\ \hline \text{NIIN} \end{array}$$

When using this column to locate an item, ignore the first 4 digits of the NSN. However, the complete NSN should be used when ordering items by stock number.

(2) **FIG. column.** This column lists the number of the figure where the item is identified/located. The figures are in numerical order in Section II and Section III.

(3) **ITEM column.** The item number identifies the item associated with the figure listed in the adjacent FIG. column. This item is also identified by the NSN listed on the same line.

b. **PART NUMBER INDEX.** Part numbers in this index are listed by part number in ascending alphanumeric sequence (i.e., vertical arrangement of letter and number combination which places the first letter or digit of each group in order A through Z, followed by the numbers 0 through 9 and each following letter or digit in like order).

(1) **CAGEC column.** The Commercial and Government Entity Code (CAGEC) is a 5-digit numeric code used to identify the manufacturer, distributor, or Government agency, etc., that supplies the item.

(2) **PART NUMBER column.** Indicates the primary number used by the manufacturer (individual, firm, corporation, or Government activity), which controls the design and characteristics of the item by means of its engineering drawings, specifications standards, and inspection requirements to identify an item or range of items.

(3) **STOCK NUMBER column.** This column lists the NSN for the associated part number and manufacturer identified in the PART NUMBER and CAGEC columns to the left.

(4) **FIG. column.** This column lists the number of the figure where the item is identified/located in Sections II and III.

(5) **ITEM column.** The item number is that number assigned to the item as it appears in the figure referenced in adjacent figure number column.



**c. FIGURE AND ITEM NUMBER INDEX.**

(1) **FIG. column.** This column lists the number of the figure where the item is identified/located in Section II and II.

(2) **ITEM column.** The item number is that number assigned to the item as it appears in the figure referenced in the adjacent figure number column.

(3) **STOCK NUMBER column.** This column lists the NSN for the item.

(4) **CAGEC column.** The Commercial and Government Entity Code (CAGEC) is a 5-digit numeric code used to identify the manufacturer, distributor, or Government agency, etc., that supplies the item.

(5) **PART NUMBER column.** Indicates the primary number used by the manufacturer (individual, firm, corporation, or Government activity), which controls the design and characteristics of the item by means of its engineering drawings, specifications standards, and inspection requirements to identify an item or range of items.

**5. SPECIAL INFORMATION.**

**a. USABLE ON CODE.** The usable on code appears in the lower corner of the Description column heading. Usable on codes are shown as "UOC: ....." in the Description Column (justified left) on the last line applicable item description/nomenclature. Uncoded items are applicable to all models.

**b. ASSOCIATED PUBLICATIONS.** The publications listed below pertains to the Refrigerator, Prefabricated (1200 Cubic Foot) and its components.

Publication	Short Title
TM 5-4110-246-14	Refrigerator, Prefabricated (1200 Cubic Foot)

**6. HOW TO LOCATE REPAIR PARTS.**

**a. When National Stock Number or Part Number is NOT Known.**

(1) **First.** Using the table of contents, determine the assembly group or subassembly group to which the item belongs. This is necessary since figures are prepared for assembly groups and subassembly groups, and listings are divided into the same groups.

(2) **Second.** Find the figure covering the assembly group or subassembly group to which the item belongs.

(3) **Third.** Identify the item on the figure and note the item number.

(4) **Fourth.** Refer to the Repair Parts List for the figure to find the part number for the item number noted on the figure.

(5) **Fifth.** Refer to the Part Number Index to find the NSN, if assigned.

**b. When National Stock Number or Part Number Is Known.**

**(1) First.** Using the Index of National Stock Numbers and Part Numbers, find the pertinent National Stock Number or Part Number. The NSN index is in National Item Identification Number (NIIN) sequence (see c-a.(1)). The part numbers in the Part Number index are listed in ascending alphanumeric sequence (see paragraph c-4.b). Both indexes cross-reference you to the illustration figure and item number of the item you are looking for.

**(2) Second.** After finding the figure and item number, verify that the item is the one you are looking for, then locate the item number in the repair parts list for the figure.

**7. ABBREVIATIONS.** Abbreviations used in this manual are listed in MIL-STD-12.

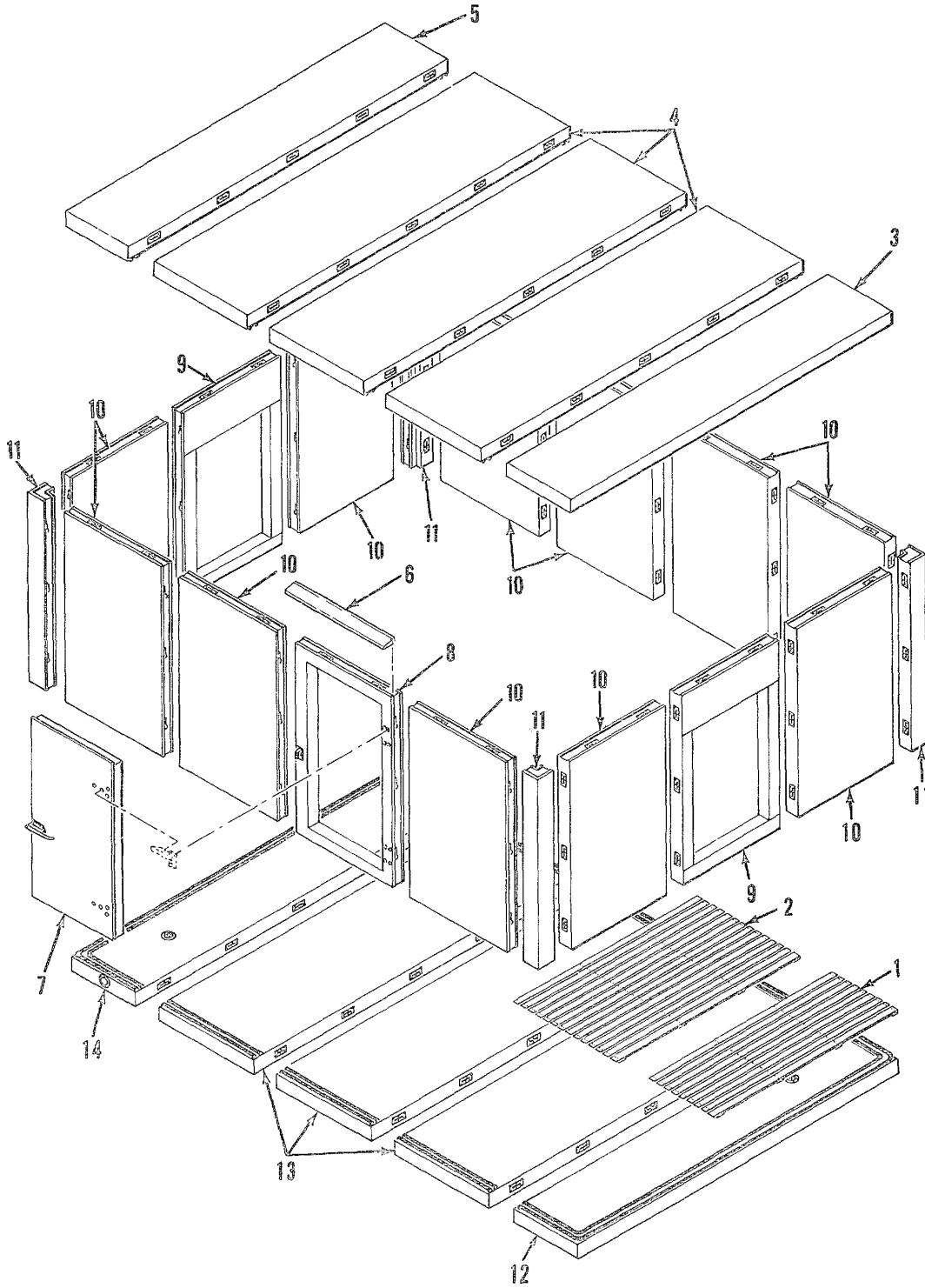


Figure 1. 1200 Cubic Foot Prefabricated Refrigerator

SECTION II

(1) ITEM NO	(2) SMR CODE	(3) CAGEC	(4) PART NUMBER	(5) DESCRIPTION AND USABLE ON CODES (UOC)	(6) QTY
-------------------	--------------------	--------------	-----------------------	----------------------------------------------	------------

GROUP 00 REFRIGERATUR PREFABRICATED

FIG. 1 1200 CUBIC FOOT  
 PREFABRICATED REFRIGERATOR

1	XBOZZ	53853	9914-G	FLOOR RACK, SMALL .....	4
2	XBOZZ	53853	9915-G	FLOOR RACK, LARGE .....	6
3	PAOFF	53853	90120CA	CEILING PNL ASSY, R .....	1
4	PAOFF	53853	90121C	CLG PANEL ASSY, CTR .....	3
5	PAOFF	53853	90118C	CEILING PNL ASSY, L .....	1
6	PAOFZ	53853	90024	COVER, ACCESS .....	1
7	PAOFD	53853	90105	DOOR, WALK-IN REFRIG .....	1
8	PAOFF	53853	90106C	PANEL ASSY DOOR FR .....	1
9	PAOFF	53853	90115C	EVAPORATOR PNL ASSY .....	2
10	PAOFF	53853	90114C	STD WIALL PNL ASSY .....	11
11	PAOFF	53853	90113CA	CORNER PANEL ASSY .....	4
12	PAOFF	53853	90119CA	PANEL ASSY, RIGHT .....	1
13	PAOFF	53853	90122C	PANEL ASSY FL CTR .....	3
14	PAOFF	53853	90117C	PANEL ASSY, FL, LEFT .....	1

END OF FIGURE

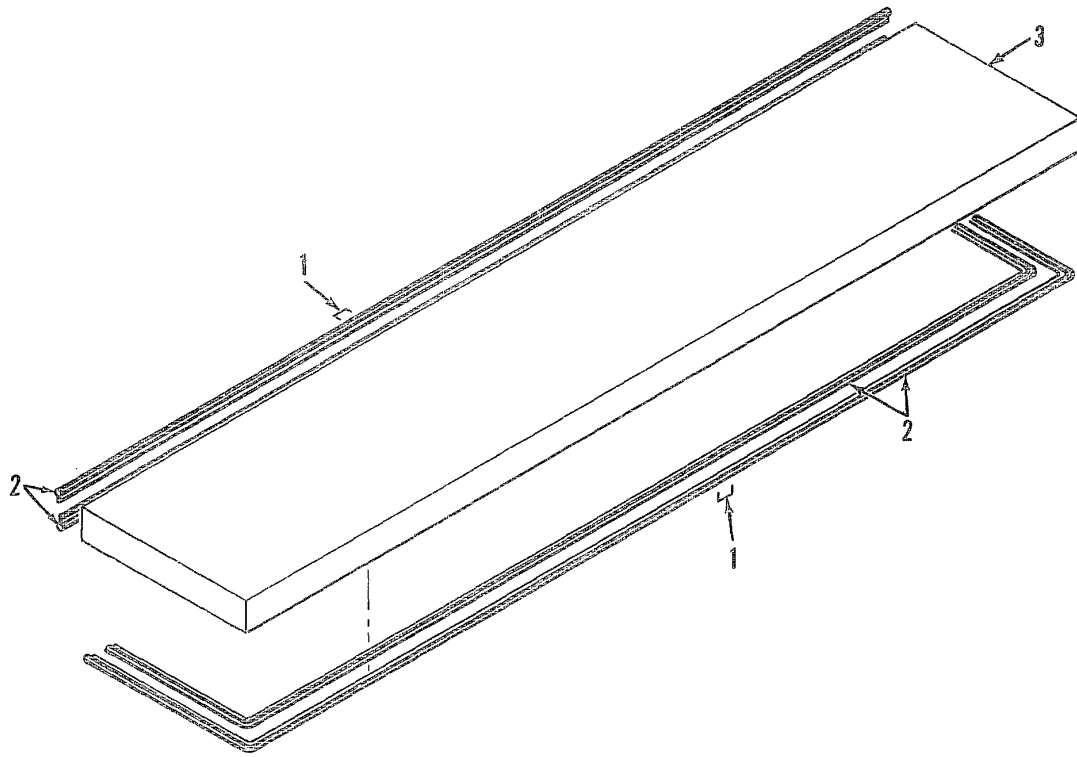


Figure 2. Right Ceiling Panel Assembly

	SECTION II				
(1)	(2)	(3)	(4)	(5)	(6)
ITEM	SMR		PART		
NO	CODE	CAGEC	NUMBER	DESCRIPTION AND USABLE ON CODES (UOC)	QTY

GROUP 01 RIGHT CEILING PANEL  
 ASSEMBLY

FIG. 2 RIGHT CEILING PANEL ASSEMBLY

1	PAOZZ	16245	PW-50-1/2	.STAPLE .....	294
2	PAOZZ	74951	NX502B-1	.SEAL, NONMETALLIC SP .....	62
3	XAOZZ	53853	90120CA	.CEILING PANEL, RIGHT .....	1

END OF FIGURE

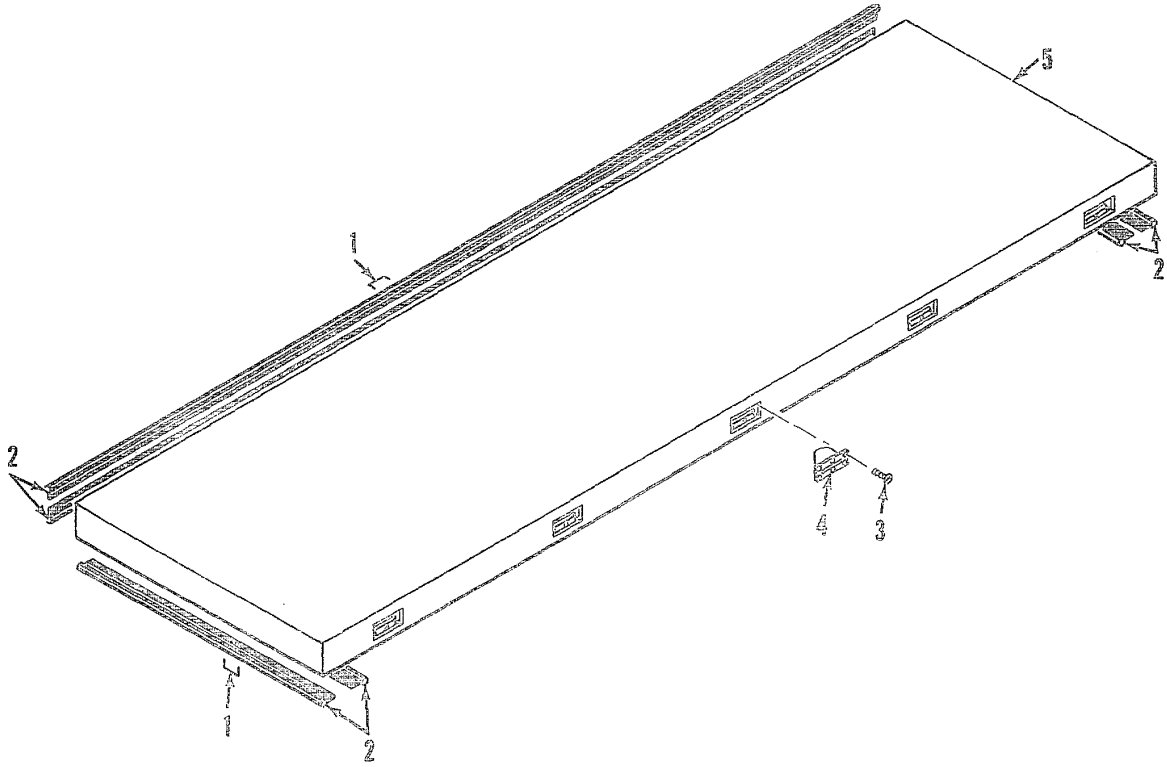


Figure 3. Center Ceiling Panel Assembly

SECTION II

(1)	(2)	(3)	(4)	(5)	(6)
ITEM	SMR		PART		
NO	CODE	CAGEC	NUMBER	DESCRIPTION AND USABLE ON CODES (UOC)	QTY

GROUP 02 CENTER CEILING PANEL  
 ASSEMBLY

FIG. 3 CENTER CEILING PANEL  
 ASSEMBLY

1	PAOZZ	16245	PW-50-1/2	.STAPLE .....	252
2	PAOZZ	74951	NX502B-1	.SEAL, NONMETALLIC SP .....	42
3	PAOZZ	87308	C003	.SCREW, MACHINE .....	30
4	PAOZZ	53853	90021	.CAMLOCK ASSEMBLY .....	5
5	XAOZZ	53853	90121CA	.CEILING PANEL, CTR .....	1

END OF FIGURE



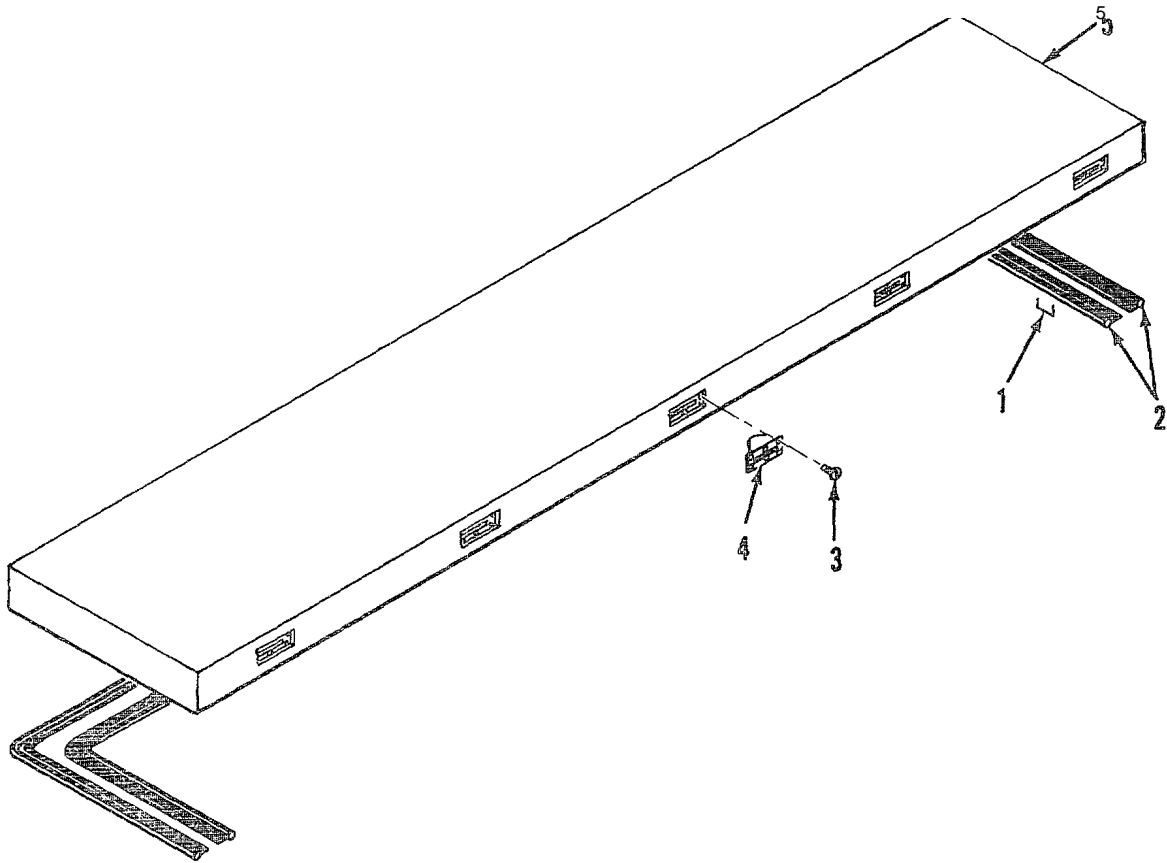


Figure 4. Left Ceiling Panel Assembly

SECTION II

(1) ITEM NO	(2) SMR CODE	(3) CAGEC	(4) PART NUMBER	(5) DESCRIPTION AND USABLE ON CODES (UOC)	(6) QTY
-------------------	--------------------	--------------	-----------------------	----------------------------------------------	------------

GROUP 03 LEFT CEILING PANEL  
 ASSEMBLY

GROUP 04 DOOR CANOPY (SEE FIG. 1)

FIG. 4 LEFT CEILING PANEL ASSEMBLY

1	PAOZZ	16245	PW-50-1/2	.STAPLE .....	192
2	PAOZZ	74951	NX502B-1	.SEAL, NONMETALLIC SP .....	36
3	PAOZZ	87308	C003	.SCREW, MACHINE .....	30
4	PAOZZ	53853	90021	.CAMLOCK ASSEMBLY .....	5
5	XAOZZ	53853	90118CA	.CEILING PANEL, LEFT .....	1

END OF FIGU:E

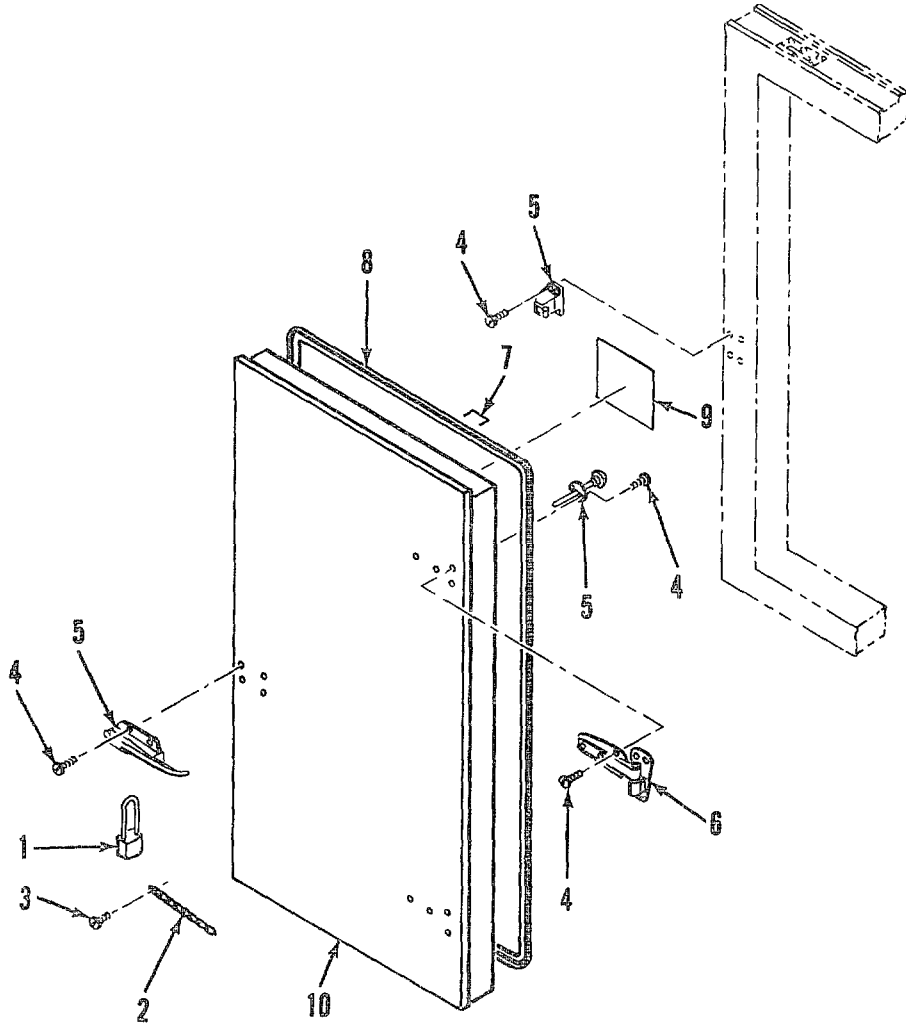


Figure 5. Walk-In Door Assembly

SECTION II				
(1)	(2)	(3)	(4)	(5)
ITEM	SMR		PART	
NO	CODE	CAGEC	NUMBER	DESCRIPTION AND USABLE ON CODES (UOC)
				QTY

GROUP 05 WALK-IN DOOR ASSEMBLY

FIG. 5 WALK-IN DOOR ASSEMBLY

1	PAOZZ	53853	4882	.PADLOCK .....	1
2	PAOZZ	53853	4885	.CHAIN ASSEMBLY, SING .....	1
3	XDOZZ	87308	C004	.SCREN, MACHIEE .....	3
4	PAOZZ	87308	C003	.SCRE W, MACHINE .....	26
5	PAOZZ	32761	K-56	.LATCH SE T, RIM .....	1
6	PAOZZ	32761	1245	.HINGE, TEE .....	2
7	PAOZZ	16245	PW-50-1/2	.STAPLE .....	114
8	PAOZZ	74951	PHD-502N-1	.NONMETALLIC SPECIAL .....	19
9	PAOZZ	53853	90102	.DECALMANIA .....	1
10	XAOFF	53853	90105A	.DOOR, WALK IN .....	1

END OF FIGURE

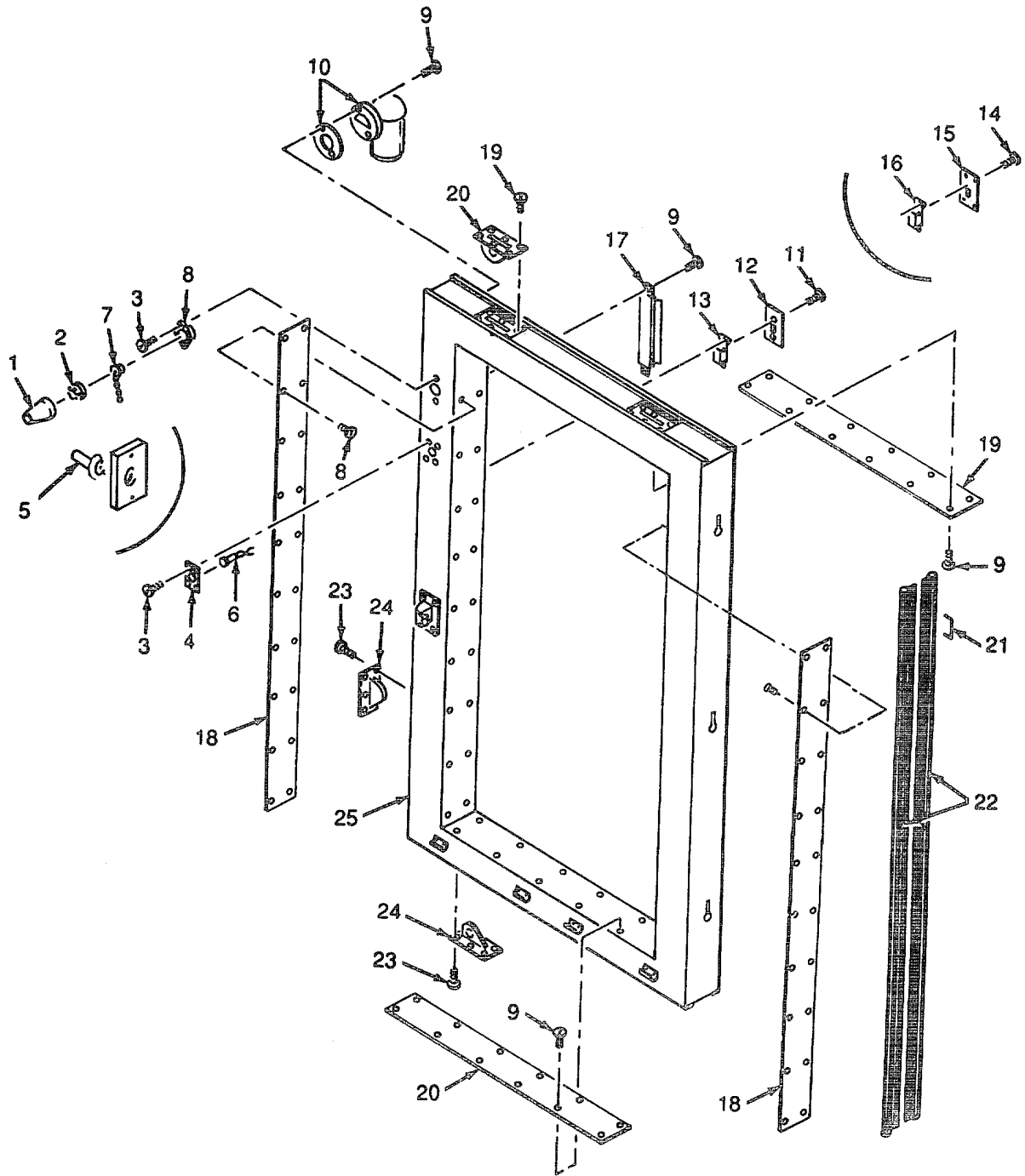


Figure 6. Door Frame Panel Assembly

(1) ITEM NO	(2) SMR CODE	(3) CAGEC CAGEC	(4) PART NUMBER	(5) DESCRIPTION AND USABLE ON CODES (UOC)	(6) QTY
-------------------	--------------------	-----------------------	-----------------------	----------------------------------------------	------------

GROUP 06 DOOR FRAME PANEL ASSEMBLY

FIG. 6 DOOR FRAME PANEL ASSEMBLY

1	PAOZZ	74545	7440	.SHIELD, ELECTRICAL C .....	1
2	PAOZZ	74545	7484	.CONNECTOR, PLUG, ELEC .....	1
3	PAOZZ	87308	C007	.SCREW, W O OD .....	6
4	PAOZZ	72765	25-1-SGS	.COVER, OUTLET .....	1
				UOC:ECJ .....	
5	PAOZZ	74545	93091	.PLATE, WALL, ELECTRIC .....	1
				UOC:EVC .....	
6	XDOZZ	71744	447-6063-001-534	.LAMP, CARTRIDGE .....	1
7	PAOZZ	74545	4884	.COVER, ELECTRICAL CO .....	1
8	PAOZZ	74545	7486	.CONNECTOR, RECEPI'ACL .....	1
9	PAOZZ	87308	C005	.SCREW, WOOD .....	68
10	PAOZZ	87518	2314-000-1000	.FIXTURE, LIGHTING .....	1
11	PAOZZ	87308	C006	.SCREW, MACHINE .....	2
				UOC:ECJ .....	
12	PAOZZ	71744	1750	.PLATE, WALL, ELECTRIC .....	1
				UOC:ECJ .....	
13	PAOZZ	74545	1251	.SWITCH, PUSH .....	1
				UOC:ECJ .....	
14	PAOZZ	87308	C006	.SCREW, MACHINE .....	4
				UOC:EVC .....	
15	PAOZZ	15235	DS128	.COVER, CONDUIT OUTLE .....	1
				UOC: EVC .....	
16	PAOZZ	81348	WS896/2-03A	.SWITCH, TOGGLE .....	1
				UOC:EVC .....	
17	PAOZZ	81348	GGT371BCLASS2STY LEB	.THERMOMETER, SELF-IN .....	1
18	PAOZZ	53853	90107	.PANEL, DOOR, JAM .....	.2
19	XBOZZ	53853	90108	.HEAD JAMB .....	1
20	PAOZZ	53853	90109	.PANEL, DOOR, JAM .....	1
21	PAOZZ	16245	PW-50-1/2	.STAPLE .....	78
22	PAOZZ	74951	NX502B-1	.SEAL, NONMETALLIC SP .....	14
23	PAOZZ	87308	C003	.SCREW, MACHINE .....	42
24	PAOZZ	53853	90021	.CAMLOCK ASSEMBLY .....	7
25	XAOZZ	53853	90106CA	.DOOR FRAME PANEL .....	1

END OF FIGURE

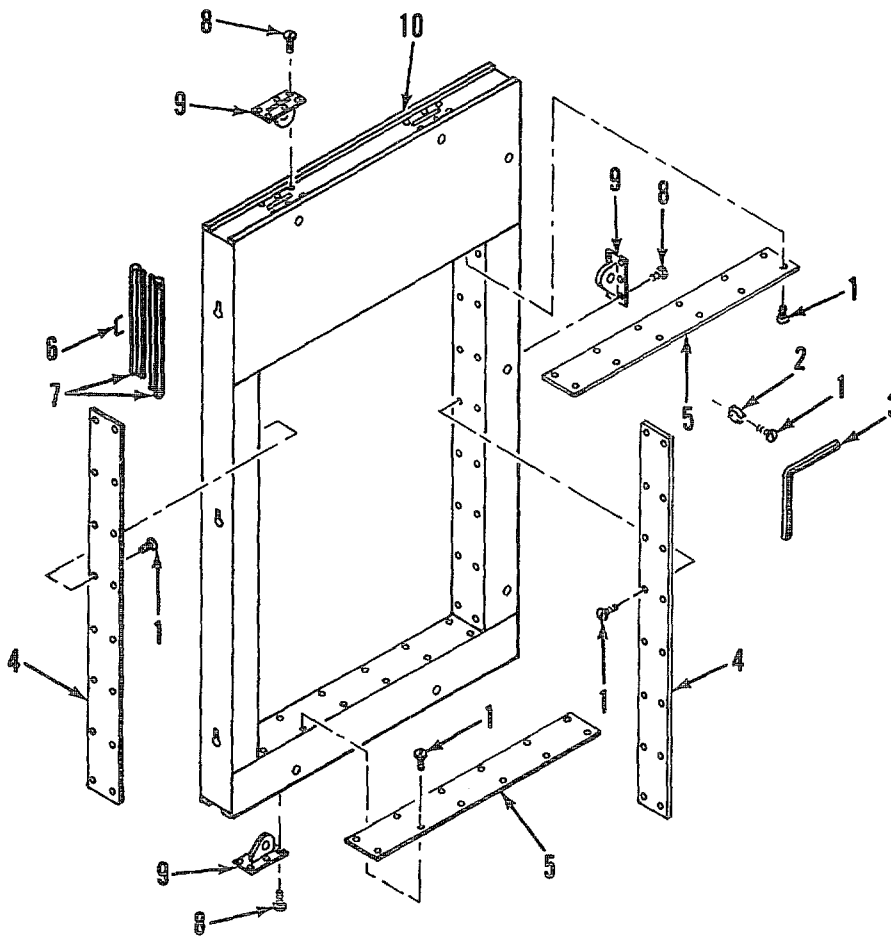


Figure 7. Evaporator Panel Assembly

SECTION II

(1) ITEM NO	(2) SMR CODE	(3) CAGEC CAGEC	(4) PART NUMBER	(5) DESCRIPTION AND USABLE ON CODES (UOC)	(6) QTY
-------------------	--------------------	-----------------------	-----------------------	----------------------------------------------	------------

GROUP 07 EVAPORATOR PANEL ASSEMBLY

FIG. 7 EVAPORATOR PANEL ASSEMBLY

1	PAOZZ	87308	C005	.SCREW, WOOD .....	64
2	PAOZZ	75915	105002	.CLIP, ELECTRICAL .....	8
3	PAOZZ	32761	1145	.KEY, SOCKET HEAD SCR .....	2
4	XAOZZ	53853	90110	.TRIM, SIDE .....	2
5	XBOZZ	53853	90111	.TRIM, TOP AND BOTTOM .....	2
6	PAOZZ	16245	PW-50-1/2	.STAPLE .....	78
7	PAOZZ	74951	NX502B-1	.SEAL, NONMETALLIC SP .....	14
8	PAOZZ	87308	C003	.SCREW, MACHINE .....	42
9	PAOZZ	53853	90021	.CAMLOCK ASSEMBLY .....	7
10	XAFZZ	53853	90115CA	.EVAPORATOR PANEL .....	1

END OF FIGURE



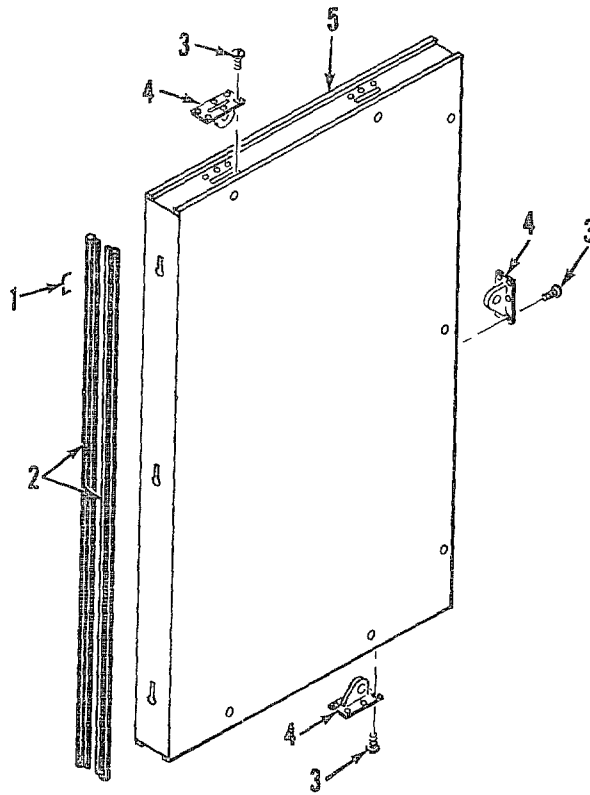


Figure 8. Standard Wall Panel Assembly

SECTION II  
 (1) (2) (3) (4) (5) (6)  
 ITEM SMR PART  
 NO CODE CAGEC NUMBER DESCRIPTION AND USABLE ON CODES (UOC) QTY

GROUP 08 STANDARD WALL PANEL  
 ASSEMBLY

FIG. 8 STANDARD WALL PANEL ASSEMBLY

1	PAOZZ	16245	PW-50-1/2	.STAPLE.....	78
2	PAOZZ	74951	NX502B-1	.SEAL, NONMETALLIC SP .....	14
3	PAOZZ	87308	C003	.SCREW, MACHINE .....	42
4	PAOZZ	53853	90021	.CAMLOCK ASSEMBLY .....	7
5	XAFZZ	53853	90114CA	.STANDARD WALL PANEL .....	1

END OF FIGURE

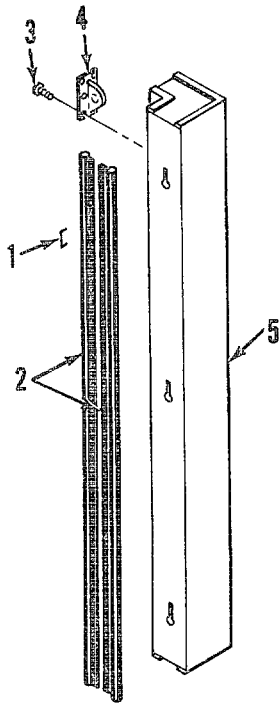


Figure 9. Corner Panel Assembly

TM 9-4110-246-24P  
TO 40R7-5-10-4

SECTION II

(1) ITEM NO	(2) SMR CODE	(3) CAGEC	(4) PART NUMBER	(5) DESCRIPTION AND USABLE ON CODES(UOC)	(6) QTY
GROUP 09 CORNER PANEL ASSEMBLY					
FIG. 09 CORNER PANEL ASSEMBLY					
1	PAOZZ	16245	PW-50-1/2	.STAPLE .....	73
2	PAOZZ	74951	NX502B-1	.SEAL, NONMETALLIC SP .....	14
3	PAOZZ	87308	C003	.SCREW, MACHINE .....	18
4	PAOZZ	53853	90021	.CAMLOCK ASSEMBLY.....	3
5	XAFZZ	53853	90113CA	.CORNER PANEL .....	1

END OF FIGURE

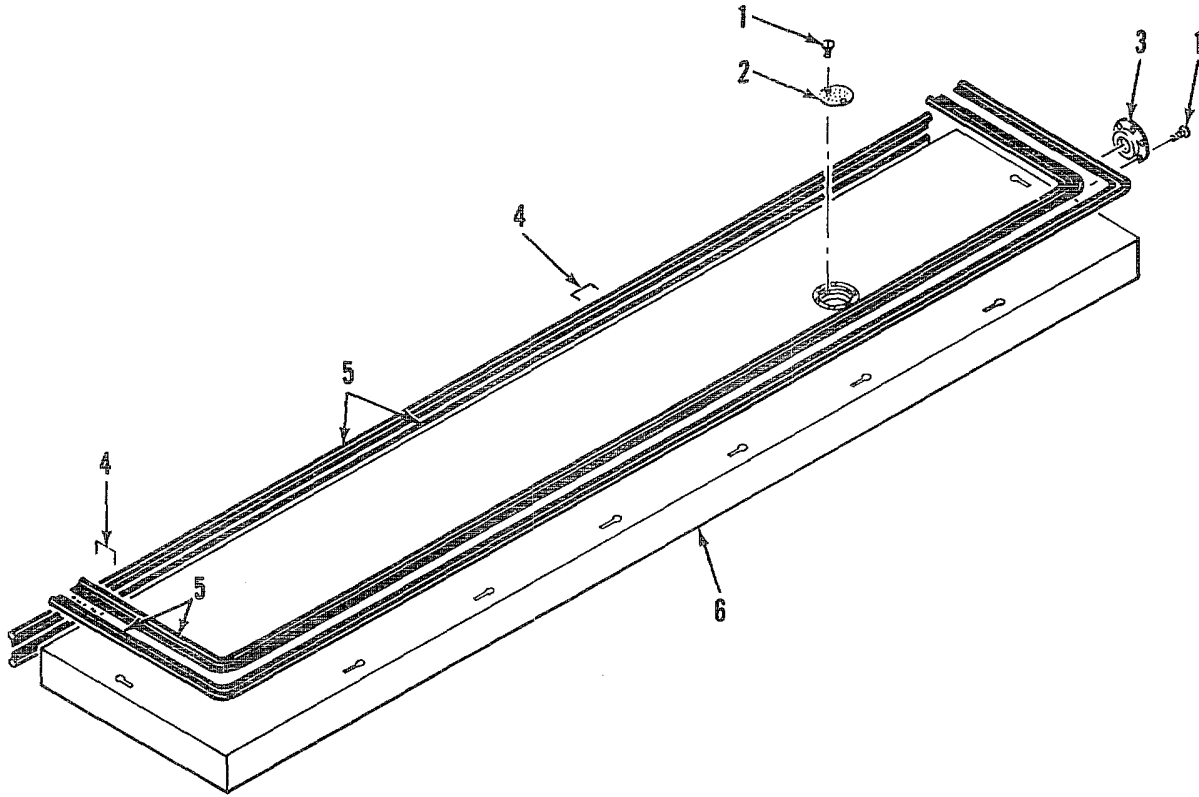


Figure 10. Right Floor Panel Assembly

TM 9-4110-246-24P  
 TO 40R7-5-10-4

SECTION II (1) ITEM NO	(2) SMR CODE	(3) CAGEC	(4) PART NUMBER	(5) DESCRIPTION AND USABLE ON CODES(UOC)	(6) QTY
---------------------------------	--------------------	--------------	-----------------------	---------------------------------------------	------------

GROUP 10 RIGHT FLOOR PANEL ASSEMBLY

FIG. 10 RIGHT FLOOR PANEL ASSEMBLY

1	PAOZZ	87308	C007	.SCREW, WOOD .....	8
2	XDOZZ	53853	90132	.STRAINER, HASTE DRAI .....	1
3	PAOZZ	53853	90130	.DRAIN, FLOOR .....	1
4	PAOZZ	16245	PW-50-1/2	.STAPLE .....	192
5	PAOZZ	74951	NX502B-1	.SEAL, NONMETALLIC SP .....	62
6	XAFZZ	53853	90119CA	.FLOOR PANEL, RIGHT .....	1

END OF FIGURE

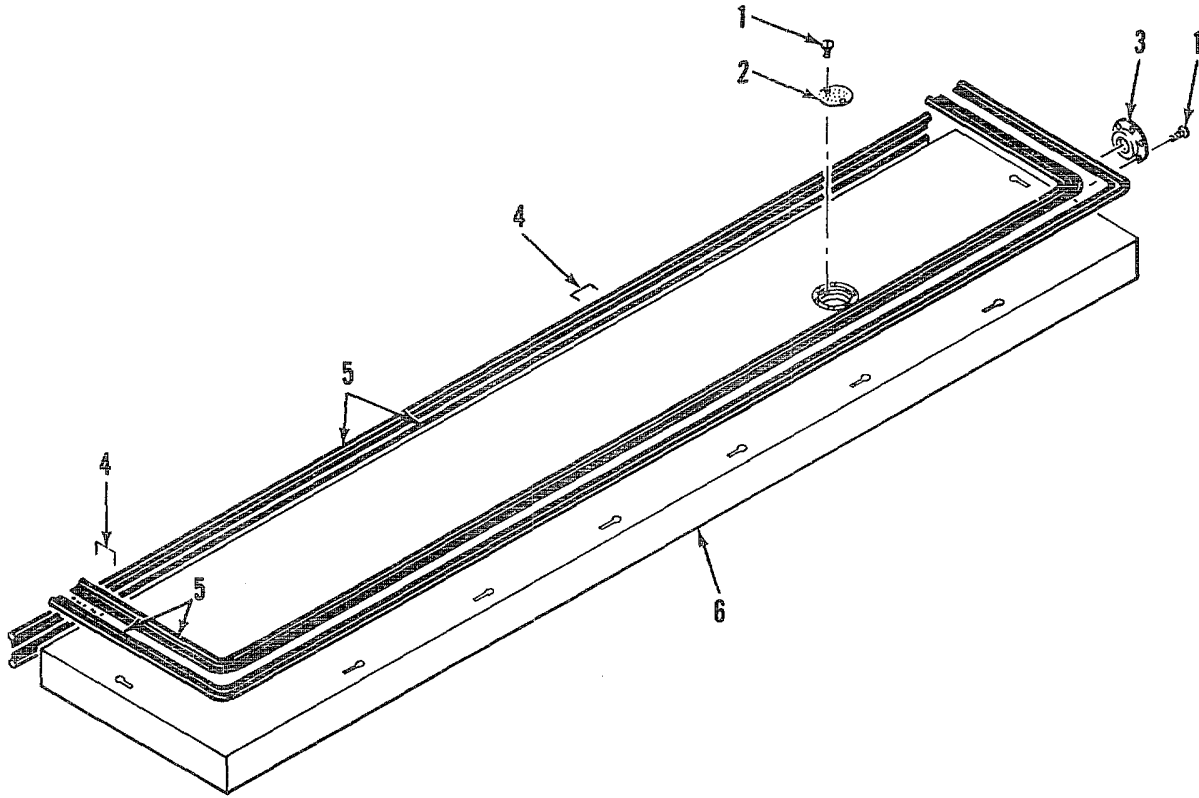


Figure 11. Center Floor Panel Assembly

TM 9-4110-246-24P  
 TO 40R7-5-10-4

SECTION II (1) ITEM NO	(2) SMR CODE	(3) CAGEC	(4) PART NUMBER	(5) DESCRIPTION AND USABLE ON CODES(UOC)	(6) QTY
---------------------------------	--------------------	--------------	-----------------------	---------------------------------------------	------------

GROUP 11 CENTER FLOOR PANEL

FIG. 11 CENTER FLOOR PANEL

1	PAOZZ	16245	PW-50-1/2	.STAPLE .....	258
2	PAOZZ	74951	NX502B-1	.SEAL, NONMETALLIC SP .....	42
3	PAOZZ	87308	C003	.SCREW, MACHINE .....	30
4	PAOZZ	53853	90021	.CAMLOCK ASSEMBLY.....	5
5	XAFZZ	53853	90122CA	.PANEL, FLOOR, CENTER.....	1

END OF FIGURE



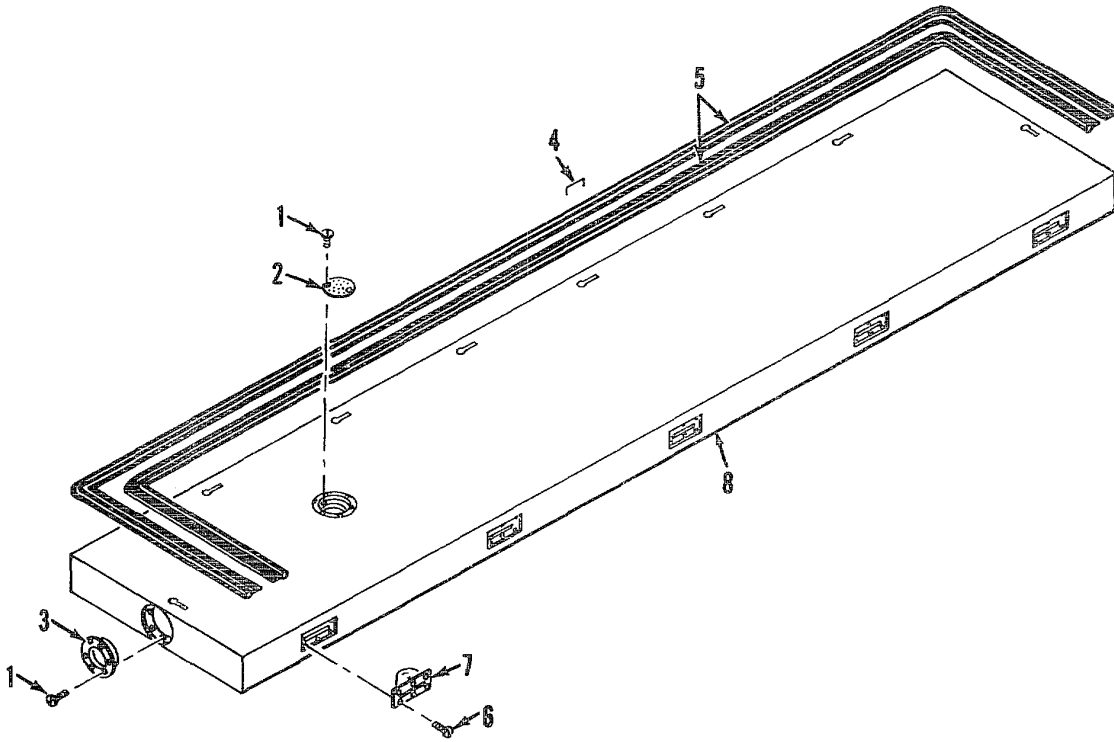


Figure 12. Left Floor Panel Assembly

TM 9-4110-246-24P  
 TO 40R7-5-10-4

SECTION II  
 (1) (2)  
 ITEM SMR  
 NO CODE

(3)  
 CAGEC

(4)  
 PART  
 NUMBER

(5)

(6)

DESCRIPTION AND USABLE ON CODES(UOC)

QTY

GROUP 12 LEFT FLOOR PANEL ASSEMBLY

GROUP 13 FLOOR RACKS, LARGE AND  
 SMALL (SEE FIG. 1)

FIG. 12 LEFT FLOOR PANEL ASSEMBLY

1	PAOZZ	87308	C007	.SCREW, WOOD .....	8
2	XDOZZ	53853	90132	.STRAINER, WASTE DRAI .....	1
3	PAOZZ	53853	90130	.DRAIN, FLOOR.....	1
4	PAOZZ	16245	PW-50-1/2	.STAPLE .....	192
5	PAOZZ	74951	NX502B-1	.SEAL, NONMETALLIC SP .....	36
6	PAOZZ	87308	C003	.SCREW, MACHINE .....	30
7	PAOZZ	53853	90021	.CAMLOCK ASSEMBLY.....	5
8	XDOZZ	53853	90117CA	.PANEL, CEILING .....	1

END OF FIGURE

SECTION III

(Not applicable)

## CROSS-REFERENCE INDEXES

STOCK NUMBER	FIG.	NATIONAL STOCK NUMBER INDEX		FIG.	ITEM
		ITEM	STOCK NUMBER		
5930-00-015-0744	6	13	5315-01-185-3670	3	1
5930-00-051-4448	6	16		4	1
5935-00-081-3251	6	2		5	7
5935-00-201-3545	6	8		6	21
5935-00-222-0072	6	1		7	6
5305-00-224-0147	6	3		8	1
	10	1		9	1
	12	1		10	4
5999-00-244-5390	7	2		11	1
5975-00-280-8492	6	5		12	4
5340-00-617-7630	5	5	4010-01-216-2566	5	2
5330-00-672-8738	2	2	5340-01-305-2549	1	6
	3	2	5305-01-305-4238	6	11
	4	2		6	14
	6	22			
	7	7			
	8	2			
	9	2			
	10	5			
	11	2			
	12	5			
9390-00-720-4535	5	8			
6685-00-889-7444	6	17			
4130-01-039-6361	1	7			
5975-01-041-3621	6	15			
6210-01-079-1975	6	10			
4110-01-079-6861	3	4			
	4	4			
	6	24			
	7	9			
	8	4			
	9	4			
	11	4			
	12	7			
5340-01-081-8269	5	6			
5305-01-137-4984	6	9			
	7	1			
5305-01-137-5087	3	3			
	4	3			
	5	4			
	6	23			
	7	8			
	8	3			
	9	3			
	11	3			
	12	6			
5935-01-138-9743	6	7			
4510-01-146-4623	10	3			
	12	3			
5315-01-185-3670	2	1			

## CROSS-REFERENCE INDEXES

CAGEC	PART NUMBER	PART NUMBER INDEX STOCK NUMBER	FIG.	ITEM			
87308	C003	5305-01-137-5087	3	3			
			4	3			
			5	4			
			6	23			
			7	8			
			8	3			
			9	3			
			11	3			
			12	6			
			87308	C004		5	3
			87308	C005	5305-01-137-4984	6	9
						7	1
87308	C006	5305-01-305-4238	6	11			
			6	14			
87308	C007	5305-00-224-0147	6	3			
			10	1			
			12	1			
15235	DS128	5975-01-041-3621	6	15			
81348	GGT371BCLASS2STY LEB	6685-00-889-7444	6	17			
32761	K-56	5340-00-617-7630	5	5			
74951	NX502B-1	5330-00-672-8738	2	2			
			3	2			
			4	2			
			6	22			
			7	7			
			8	2			
			9	2			
			10	5			
			11	2			
			12	5			
74951	PHD-502N-1	9390-00-720-4535	5	8			
16245	PW-50-1/2	5315-01-185-3670	2	1			
			3	1			
			4	1			
			5	7			
			6	21			
			7	6			
			8	1			
			9	1			
			10	4			
			11	1			
			12	4			
81348	WS896/2-03A	5930-00-051-4448	6	16			
75915	105002	5999-00-244-5390	7	2			
32761	1145		7	3			
32761	1245	5340-01-081-8269	5	6			
74545	1251	5930-00-015-0744	6	13			
71744	1750		6	12			
87518	2314-000-1000	6210-01-079-1975	6	10			
72765	25-1-SGS		6	4			

## CROSS-REFERENCE INDEXES

CAGEC	PART NUMBER	PART NUMBER INDEX STOCK NUMBER	FIG.	ITEM
71744	447-6063-001-534		6	6
53853	4882		5	1
74545	4884	5935-01-138-9743	6	7
53853	4885	4010-01-216-2566	5	2
74545	7440	5935-00-222-0072	6	1
74545	7484	5935-00-081-3251	6	2
74545	7486	5935-00-201-3545	6	8
53853	90021	4110-01-079-6861	3	4
			4	4
			6	24
			7	9
			8	4
			9	4
			11	4
			12	7
53853	90024	5340-01-305-2549	1	6
53853	90102		5	9
53853	90105	4130-01-039-6361	1	7
53853	90105A		5	10
53853	90106C		1	8
53853	90106CA		6	25
53853	90107		6G	8
53853	90108		6	19
53853	90109		6	23
53853	90110		7	4
53853	90111		7	5
53853	90113CA		1	11
			9	5
53853	90114C		1	10
53853	90114CA		8	5
53853	90115C		1	9
53853	90115CA		7	10
53853	90117C		1	14
53853	90117CA		12	8
53853	90118C		1	5
53853	90118CA		4	5
53853	90119CA		1	12
			10	6
53853	90120CA		1	3
			2	3
53853	90121C		1	4
53853	90121CA		3	5
53853	90122C		1	13
53853	90122CA		11	5
53853	90130	4510-01-146-4623	10	3
			12	3
53853	90132		10	2
			12	2
74545	93091	5975-00-280-8492	6	5
53853	9914-G		1	1
53353	9915-G		1	2

## CROSS-REFERENCE INDEXES

FIG.	ITEM	FIGURE AND ITEM NUMBER INDEX		PART NUMBER
		STOCK NUMBER	CAGEC	
1	1		53853	9914-G
1	2		53853	9915-G
1	3		53853	90120CA
1	4		53853	90121C
1	5		53853	90118C
1	6	5340-01-305-2549	53853	90024
1	7	4130-01-039-6361	53853	90105
1	8		53853	90106C
1	9		53853	90115C
1	10		53853	90114C
1	11		53853	90113CA
1	12		53853	90119CA
1	13		53853	90122C
1	14		53853	90117C
2	1	5315-01-185-3670	16245	PW-50-1/2
2	2	5330-00-672-8738	74951	NX502B-I
2	3		53853	90120CA
3	1	5315-01-185-3670	16245	PW-50-1/2
3	2	5330-00-672-8738	74951	NX502B-1
3	3	5305-01-137-5087	87308	C003
3	4	4110-01-079-6861	53853	90021
3	5		53853	90121CA
4	1	5315-01-185-3670	16245	PW-50-1/2
4	2	5330-00-672-8738	74951	NX502B-1
4	3	5305-01-137-5087	87308	C003
4	4	4110-01-079-6861	53853	90021
4	5		53853	90118CA
5	1		53853	4882
5	2	4010-01-216-2566	53853	4885
5	3		87308	C004
5	4	5305-01-137-5087	87308	C003
5	5	5340-00-617-7630	32761	K-56
5	6	5340-01-081-8269	32761	1245
5	7	5315-01-185-3670	16245	PW-50-1/2
5	8	9390-00-720-4535	74951	PHD-502N-1
5	9		53853	90102
5	10		53853	90105A
6	1	5935-00-222-0072	74545	7440
6	2	5935-00-081-3251	74545	7484
6	3	5305-00-224-0147	87308	C007
6	4		72765	25-1-SGS
6	5	5975-00-280-8492	74545	93091
6	6		71744	447-6063-001-534
6	7	5935-01-138-9743	74545	4884
6	8	5935-00-201-3545	74545	7486
6	9	5305-01-137-4984	87308	C005
6	10	6210-01-079-1975	87518	2314-000-1000
6	11	5305-01-305-4238	87308	C006
6	12		71744	1750
6	13	5930-00-015-0744	74545	1251
6	14	5305-01-305-4238	87308	C006

## CROSS-REFERENCE INDEXES

FIG.	ITEM	FIGURE AND ITEM NUMBER INDEX		PART NUMBER
		STOCK NUMBER	CAGEC	
6	15	5975-01-041-3621	15235	DS128
6	16	5930-00-051-4448	81348	WS896/2-03A
6	17	6685-00-889-7444	81348	GGT371BCLASS2STY LEB
6	18		53853	90107
6	19		53853	90108
6	20		53853	90109
6	21	5315-01-185-3670	16245	PW-50-1/2
6	22	5330-00-672-8738	74951	NX502B-1
6	23	5305-01-137-5087	87308	C003
6	24	4110-01-079-6861	53853	90021
6	25		53853	90106CA
7	1	5305-01-137-4984	87308	C005
7	2	5999-00-244-5390	75915	105002
7	3		32761	1145
7	4		53853	90110
7	5		53853	90111
7	6	5315-01-185-3670	16245	PW-50-1/2
7	7	5330-00-672-8738	74951	NX502B-1
7	8	5305-01-137-5087	87308	C003
7	9	4110-01-079-6861	53853	90021
7	10		53853	90115CA
8	1	5315-01-185-3670	16245	PW-50-1/2
8	2	5330-00-672-8738	74951	NX502B-1
8	3	5305-01-137-5087	87308	C003
8	4	4110-01-079-6861	53853	90021
8	5		53853	90114CA
9	1	5315-01-185-3670	16245	PW-50-1/2
9	2	5330-00-672-8738	74951	NX502B-1
9	3	5305-01-137-5087	87308	C003
9	4	4110-01-079-6861	53853	90021
9	5		53853	90113CA
10	1	5305-00-224-0147	87308	C007
10	2		53853	90132
10	3	4510-01-146-4623	53853	90130
10	4	5315-01-185-3670	16245	PW-50-1/2
10	5	5330-00-672-8738	74951	NX502B-1
10	6		53853	90119CA
11	1	5315-01-185-3670	16245	PW-50-1/2
11	2	5330-00-672-8738	74951	NX502B-1
11	3	5305-01-137-5087	87308	C003
11	4	4110-01-079-6861	53853	90021
11	5		53853	90122CA
12	1	5305-00-224-0147	87308	C007
12	2		53853	90132
12	3	4510-01-146-4623	53853	90130
12	4	5315-01-185-3670	16245	PW-50--1/2
12	5	5330-00-672-8738	74951	NX502B-1
12	6	5305-01-137-5087	87308	C003
12	7	4110-01-079-6861	53853	90021
12	8		53853	90117CA



By Order of the Secretaries of the Army and Air Force:

**CARL E. VUONO**  
*General, United States Army*  
*Chief of Staff*

Official:

**THOMAS F. SIKORA**  
*Brigadier General, United States Army*  
*The Adjutant General*

**MERRILL A. McPEAK,**  
*General USAF*  
*Chief of Staff*

Official:

**CHARLES C. MCDONALD**  
*General, USAF*  
*Commander, Air Force Logistics Command*

DISTRIBUTION:

To be distributed in accordance with DA Form 12-25E, (Qty rqr blk no 3789)

RECOMMENDED CHANGES TO EQUIPMENT TECHNICAL PUBLICATIONS



THEN...JOT DOWN THE  
DOPE ABOUT IT ON THIS FORM.  
CAREFULLY TEAR IT OUT, FOLD IT  
AND DROP IT IN THE MAIL.

SOMETHING WRONG WITH PUBLICATION

FROM: (PRINT YOUR UNIT'S COMPLETE ADDRESS)

DATE SENT

PUBLICATION NUMBER

PUBLICATION DATE

PUBLICATION TITLE

BE EXACT PIN-POINT WHERE IT IS

PAGE  
NO.

PARA-  
GRAPH

FIGURE  
NO.

TABLE  
NO.

IN THIS SPACE, TELL WHAT IS WRONG  
AND WHAT SHOULD BE DONE ABOUT IT.

TEAR ALONG PERFORATED LINE

PRINTED NAME, GRADE OR TITLE AND TELEPHONE NUMBER

SIGN HERE

# The Metric System and Equivalents

## Linear Measure

1 centimeter = 10 millimeters = .39 inch  
 1 decimeter = 10 centimeters = 3.94 inches  
 1 meter = 10 decimeters = 39.37 inches  
 1 dekameter = 10 meters = 32.8 feet  
 1 hectometer = 10 dekameters = 328.08 feet  
 1 kilometer = 10 hectometers = 3,280.8 feet

## Weights

1 centigram = 10 milligrams = .15 grain  
 1 decigram = 10 centigrams = 1.54 grains  
 1 gram = 10 decigram = .035 ounce  
 1 dekagram = 10 grams = .35 ounce  
 1 hectogram = 10 dekagrams = 3.52 ounces  
 1 kilogram = 10 hectograms = 2.2 pounds  
 1 quintal = 100 kilograms = 220.46 pounds  
 1 metric ton = 10 quintals = 1.1 short tons

## Liquid Measure

1 centiliter = 10 milliliters = .34 fl. ounce  
 1 deciliter = 10 centiliters = 3.38 fl. ounces  
 1 liter = 10 deciliters = 33.81 fl. ounces  
 1 dekaliter = 10 liters = 2.64 gallons  
 1 hectoliter = 10 dekaliters = 26.42 gallons  
 1 kiloliter = 10 hectoliters = 264.18 gallons

## Square Measure

1 sq. centimeter = 100 sq. millimeters = .155 sq. inch  
 1 sq. decimeter = 100 sq. centimeters = 15.5 sq. inches  
 1 sq. meter (centare) = 100 sq. decimeters = 10.76 sq. feet  
 1 sq. dekameter (are) = 100 sq. meters = 1,076.4 sq. feet  
 1 sq. hectometer (hectare) = 100 sq. dekameters = 2.47 acres  
 1 sq. kilometer = 100 sq. hectometers = .386 sq. mile

## Cubic Measure

1 cu. centimeter = 1000 cu. millimeters = .06 cu. inch  
 1 cu. decimeter = 1000 cu. centimeters = 61.02 cu. inches  
 1 cu. meter = 1000 cu. decimeters = 35.31 cu. feet

## Approximate Conversion Factors

<i>To change</i>	<i>To</i>	<i>Multiply by</i>	<i>To change</i>	<i>To</i>	<i>Multiply by</i>
inches	centimeters	2.540	ounce-inches	newton-meters	.007062
feet	meters	.305	centimeters	inches	.394
yards	meters	.914	meters	feet	3.280
miles	kilometers	1.609	meters	yards	1.094
square inches	square centimeters	6.451	kilometers	miles	.621
square feet	square meters	.093	square centimeters	square inches	.155
square yards	square meters	.836	square meters	square feet	10.764
square miles	square kilometers	2.590	square meters	square yards	1.196
acres	square hectometers	.405	square kilometers	square miles	.386
cubic feet	cubic meters	.028	square hectometers	acres	2.471
cubic yards	cubic meters	.765	cubic meters	cubic feet	35.315
fluid ounces	milliliters	29.573	cubic meters	cubic yards	1.308
pints	liters	.473	milliliters	fluid ounces	.034
quarts	liters	.946	liters	pints	2.113
gallons	liters	3.785	liters	quarts	1.057
ounces	grams	28.349	liters	gallons	.264
pounds	kilograms	.454	grams	ounces	.035
short tons	metric tons	.907	kilograms	pounds	2.205
pound-feet	newton-meters	1.356	metric tons	short tons	1.102
pound-inches	newton-meters	.11296			

## Temperature (Exact)

°F	Fahrenheit temperature	5/9 (after subtracting 32)	Celsius temperature	°C
----	------------------------	----------------------------	---------------------	----

**PIN: 049066-000**